



Fitting Instructions

TOWBAR **SZ15AU**
For Suzuki Grand Vitara **for**
3 & 5 Door **SZ15A**
September 2005- **SZ15AQ**

MATERIALS

| | | |
|-----|---|---|
| A | 1 | Cross Bar |
| B | 2 | Brace (Fitted to 3 door only) |
| C | 1 | Side Arm (Fitted to 5 door only) |
| D | 1 | Side Arm (Fitted to 5 door only) |
| E | 1 | Side Bracket |
| F | 1 | Side Bracket |
| G | 2 | M12 x 40 x 1.25mm Fine Pitch Bolts, Lock Washers, Plain Washers (O.D. 30mm) (5-Door Only) |
| H | 2 | M12 x 40 x 1.25mm Fine Pitch Bolts, Lock Washers, Plain Washers (O.D. 40mm) (3-Door Only) |
| J | 2 | M10 x 110 x 1.5mm Pitch Bolts, Lock Washers, Plain Washers (Ø25), Nut, Bush (14 OD x 92 long) Black Rubber Blanking Grommets |
| K | 6 | M12 x 40 x 1.25mm Fine Pitch Bolts, Lock Washers, Plain Washers (O.D. 30mm) |
| L | 4 | M12 x 40 x 1.75mm Pitch Bolts, Lock Washers, Nuts, Plain Washers (O.D. 30mm) |
| M | 6 | M12 x 35 x 1.75mm Pitch Bolts, Lock Washers, Nuts, and 12 Bolt Caps |
| N | 4 | M12 Bolt Caps – for use with Flanges Neck (ZF) only |
| ZEP | 1 | Electrical Plate |

FITTING

NOTE:

On 3 Door Models only - this towbar requires drilling of the top face of the bumper, which is visible when the rear door is opened. The drilled holes are blanked off using rubber grommets supplied. This is the method suggested by Suzuki.

An alternative is to remove the bumper, drill the top face of the rear panel as described below, and re-assemble the bumper over the top of the Bolt heads (J) – slotting the bumper fixing holes as required to account for the top edge of the bumper being higher due to the bolt heads underneath.

1. Remove towing eye.
2. Loosely attach Side Brackets (E) and (F) to chassis using fasteners (K) **Note: May need to unclip wiring harness from side of chassis rails to allow fitment.**

On 3 door models only:

3. Completely remove the exhaust heat shield or just the two screws securing its rearmost edge, to gain access to the existing Ø14 mounting holes located under each corner of the shield. (Fitters preference)
4. Using the diagram below, mark out and drill the top of the bumper (Ø30) and top of rear panel (Ø11) for fasteners (J)
5. Assemble Braces (B) to bottom of rear panel with fasteners & Bushes (J). Insert Bushes (J) from underside of rear panel.
6. Cover the exposed bolt heads by inserting the supplied Rubber Grommets into the holes drilled in the top face of the bumper.
7. Secure Braces (B) to Side Brackets (E) and (F) using fasteners (L). (Note: not all fasteners (L) are required for 3 door models)
8. Assemble fasteners (H).
9. Go to step 10.

On 5 door models only:

10. Assemble Side Arms (C) & (D) to Side Brackets (E) and (F) using fasteners (L), and to chassis rails using fasteners (G).
11. Assemble Cross Bar (A) to Side Brackets (E) and (F) using fasteners (M), use Bolt Caps to cover Nut and Bolt heads.
12. Assemble Electrical Plate (ZEP) and the chosen Neck Assembly to Cross Bar (A),
13. **Fully Tighten all bolts**, starting with bolts (K).

For use with either

SZ15A Flange neck option – ZF2032. Note: This towbar must be used with either a Witter Towball (part number Z11) or Class A50-1 or A50-X towball dimensionally Conforming to A50-1 with a 'D' and 'S' value greater than or equal to that of the towbar.

SZ15AQ Detachable neck option – ZQ2032. Please refer to ZQ fitting instructions for installation

Please refer to the vehicle specification for the trailer weight and nose limits, which **must be observed.**

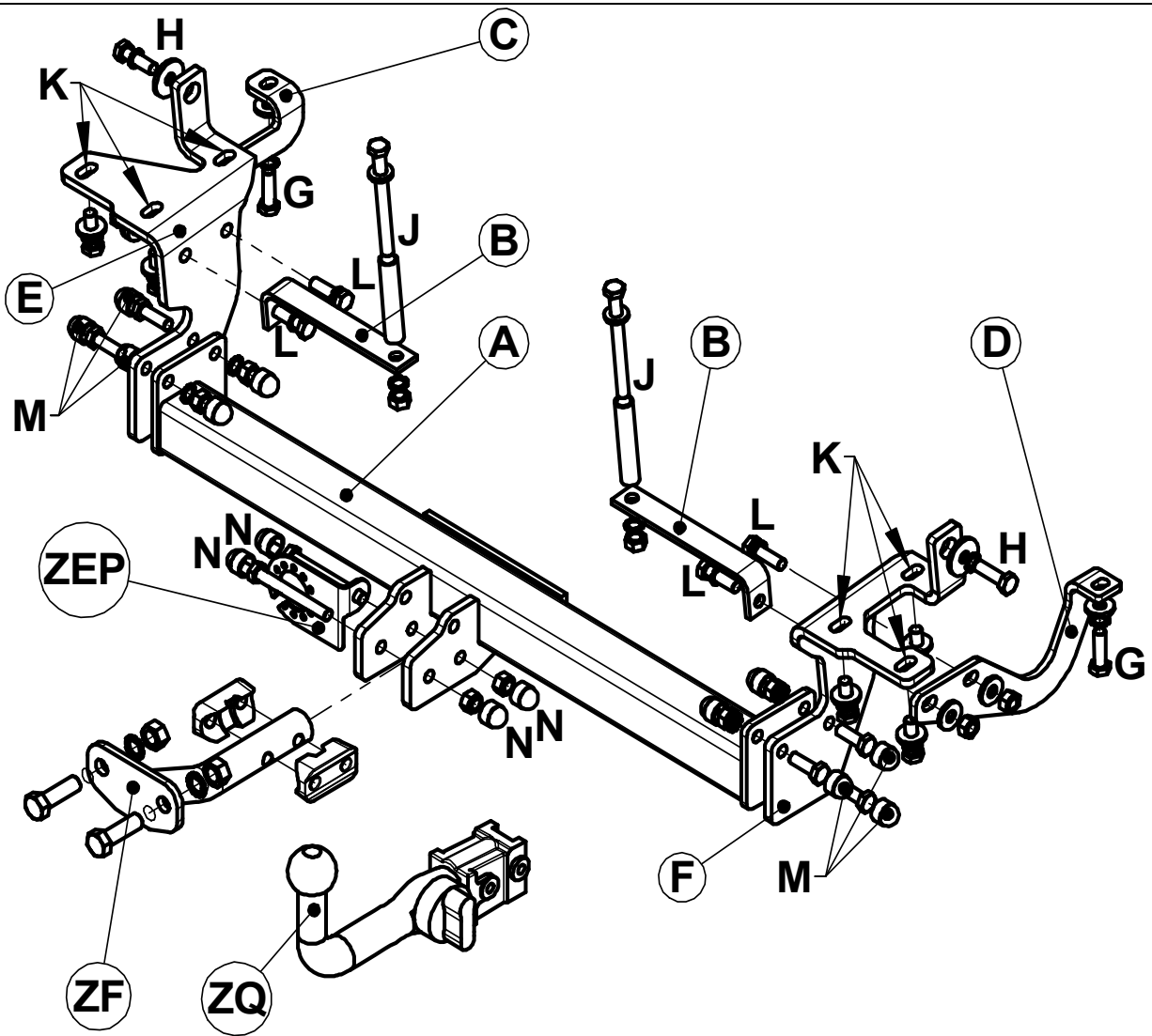
It is recommended that the towball and neck (ZF) are removed when not used for towing so as to ensure compliance with Constructions & Use Regulations relating to number plate obscuration.

Recommended torque settings: M8 - 27Nm, M10 - 53 Nm, M12 - 95 Nm, M14 - 150 Nm, M16 - 214 Nm

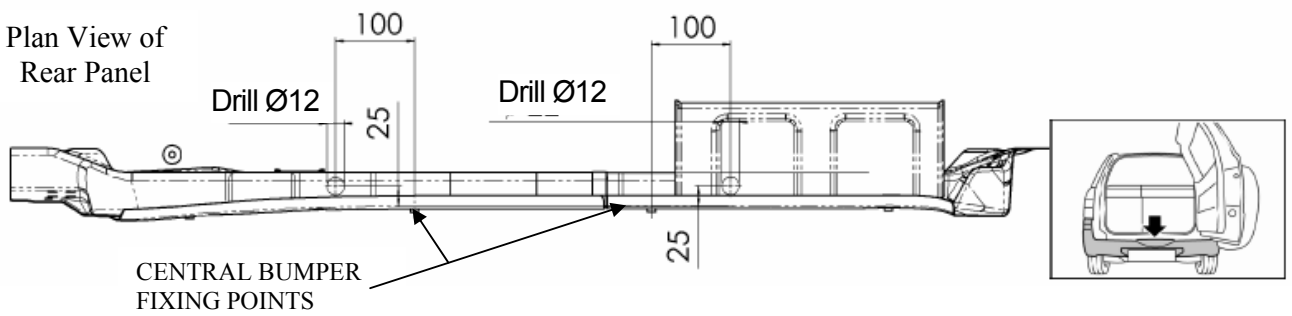
Grade 10.9: M12 – 139Nm



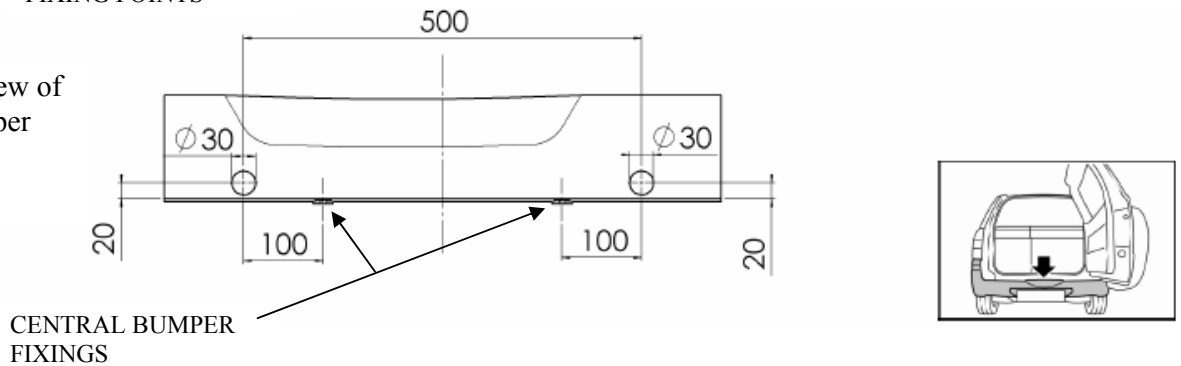
W0001SZ15AU-FIT\$020806190000



Plan View of Rear Panel



Plan View of Bumper



W0001SZ15AU-FIT\$020806190000